

Dilution Control Systems

Sink Station
Model 421914
3.5 GPM

■ OPERATION ■ SERVICE ■ PARTS ■ CARE



Multi-Clean®
Your Guide to Clean

Sink Station 421914

Installation:

1. Find a suitable area close to water source for unit. Mounting bracket should be installed approx. 5' from the floor. Level bracket and mark holes. Drill 9/32" holes and install mounting anchors and screws in bracket.

2. Remove cabinet cover and hang cabinet on bracket. Mark hole for lower cabinet screw. Remove cabinet and drill 9/32" hole.

Install anchor and screw in lower cabinet hole. When mounting unit, do not mount more than 5 feet from the floor. Also, never mount your concentrate container higher than the unit. Keyhole slots are also provided in the cabinet back if the mounting bracket won't be used.

3. Select a metering tip (see below), and insert into hose barb on eductor body.

4. Supply tube should reach from hose barb on eductor to bottom of the concentrate container. Cut supply tube provided to length required.

Slide a ceramic weight over one end of tube and slide a foot valve into the same end of the tube. (Prepare a tube for each eductor.)

5. Push other end of supply tube over the hose barb/ metering tip on the eductor. (Repeat for all eductors.)

6. Place foot valve ends of supply tubes into concentrate containers. **REMEMBER TO CHECK FOOT VALVE STRAINERS REGULARLY FOR CLOGGING: CLEAN IF NECESSARY.**

7. Longer tubes (4 feet) are used with the 3.5 GPM eductor. Slide end of tube over eductor discharge outlet. (Repeat for all eductors.) Direct hoses to the appropriate sink basin. Secure using zip ties if necessary.

8. Replace cabinet cover. Guide supply tubes through slots in sides of cabinet cover. Push the sides in, behind the latch holes, to snap the cover in place. The two screws provided may be installed in the holes in the cabinet sides to prevent easy removal of cover.

Operation:

1. Connect water supply hose of at least 3/8" ID to water inlet swivel. (Minimum 25 PSI pressure, with water running, is required for proper operation.) Connect opposite end of hose to water supply. Turn water supply on.

2. Purge air from the system by depressing the buttons briefly. There may be some water discharge from the eductor vents until the air is purged.

3. Push button to start flow of desired water/ concentrate solution, and hold until supply tube is primed. Then push the button whenever dispensing is desired, and release button to stop flow of solution. If you wish to be able to lock the button in the "on" position:

Depress button and slide button lock up. To unlock, depress button and release.

4. It is essential that the discharge hose not be obstructed. If discharge is restricted, water will flow out the eductor vents. Do not start to operate the dispenser with liquid in the discharge tube.

Tips:

15 Power Suds use purple tip (180:1)

10 Sanitizer use pink tip (350:1)

Product rack:

Optional product rack is available, item no. 421098



THANK YOU FOR YOUR INTEREST IN OUR PRODUCTS

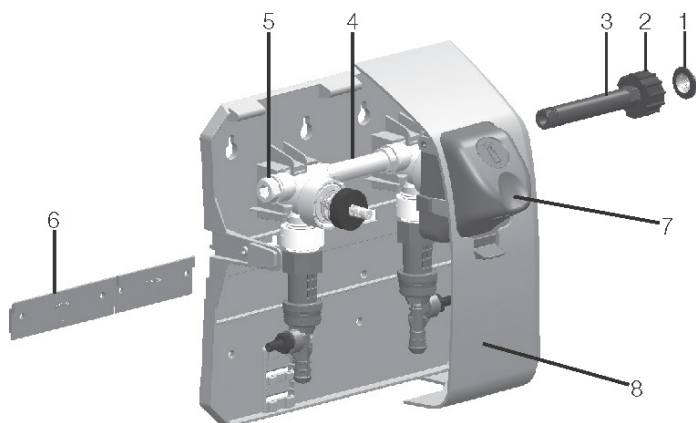
Please use this equipment carefully and observe all warnings and cautions.

***** NOTE *****

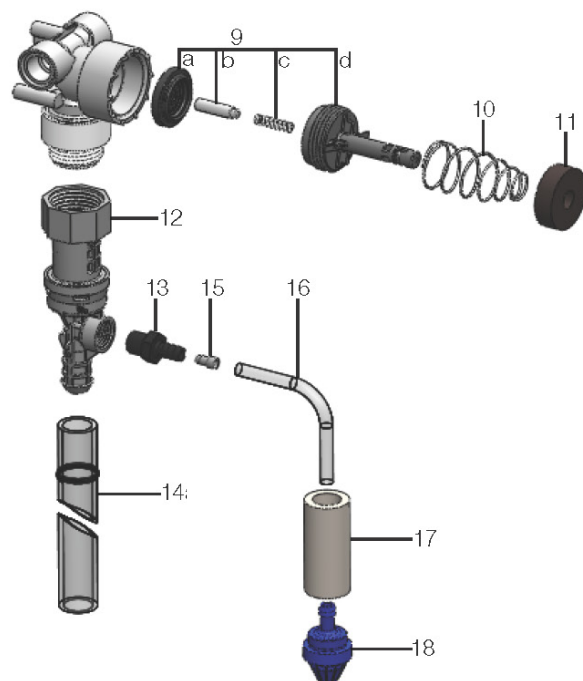
WEAR	protective clothing and eyewear when dispensing chemicals or other materials.
ALWAYS	observe safety and handling instructions
ALWAYS	direct discharge away from you or other persons or into approved containers.
ALWAYS	dispense cleaners and chemicals in accordance with instructions. Exercise CAUTION when maintaining your equipment.
KEEP	equipment clean to maintain proper operation.
WEAR	protective clothing and eyewear when working in the vicinity of all chemicals filling or emptying equipment or changing metering tips.
ALWAYS	re-assemble equipment according to instruction procedures. Be sure all components are firmly screwed or latched into position.
ATTACH	only to tap water outlets (85 PSI maximum).

TROUBLESHOOTING CHART:

Problem	Cause	Solution
1. No discharge	a. No water b. Magnetic valve not functioning c. Excessive water pressure d. Eductor clogged	a. Open water supply b. Install valve parts kit c. Install regulator if flowing water pressure exceeds 85 PSI d. Clean or replace
2. No concentrate draw	a. Clogged foot valve b. Metering tip or Air gap has scale build-up c. Low water pressure d. Discharge tube and/or flooding ring not in place e. Concentrate container empty f. Inlet hose barb not screwed into eductor tightly g. Clogged water inlet strainer	a. Clean or replace b. Clean (descale) or replace c. Minimum 25 PSI (with water running) required to operate unit properly d. Push tube firmly onto eductor discharge hose barb, or replace tube if it doesn't have a flooding ring e. Replace with full container f. Tighten, but do not overtighten g. Disconnect inlet water line and clean strainer
3. Excess concentrate draw	a. Metering tip not in place	a. Press correct tip firmly into barb on eductor
4. Failure of unit to turn off	a. Water valve parts dirty or defective b. Magnet doesn't fully return c. Push button stuck d. Excessive water pressure	a. Clean or replace with valve parts kit b. Make sure magnet moves freely. Replace spring if short or weak c. Realign cabinet or clean grommet that button passes through d. Install regulator if pressure (with water flowing) exceeds 60 PSI
5. Excess foaming in discharge	a. Air leak in pick-up tube b. Inner discharge tube not in place	a. Put clamp on tube or replace tube if brittle b. Install inner discharge tube
6. Water discharge from air	a. Restricted discharge hose vents of eductor b. High water pressure	a. Be sure discharge hose is not immersed, kinked or elevated. Be sure there is no liquid in the discharge hose when beginning to operate dispenser b. Install pressure regulator if flowing water pressure exceeds 60 PSI



Key	Description
1	Strainer washer
2	Swivel collar (molded)
3	Swivel stem 2 button (molded)
4	Nipple, plastic 3/8" (2 button models) Nipple, plastic 3/8" (3 button models) O-ring (two required per nipple)
5	Kit, Pipe plug & o-ring
6	Wall bracket
7	Button, High flow
8	Cabinet set, 2 button unit



Key	Description
9	Valve parts kit a. diaphragm b. armature c. spring d. valve bonnet
10	Spring
11	Magnet
12	3.5 GPM eductor assembly
13	Hose barb assembly* included in eductor assemblies
14	3.5 GPM discharge tube with flooding ring (4')
15	Metering tip kit
16	Tubing 1/4" x 7'
17	Weight
18	Footvalve -Viton (EPDM also available. Order 10076302)